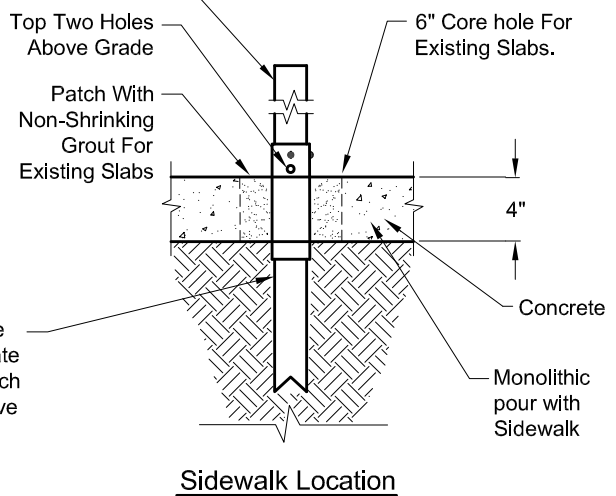
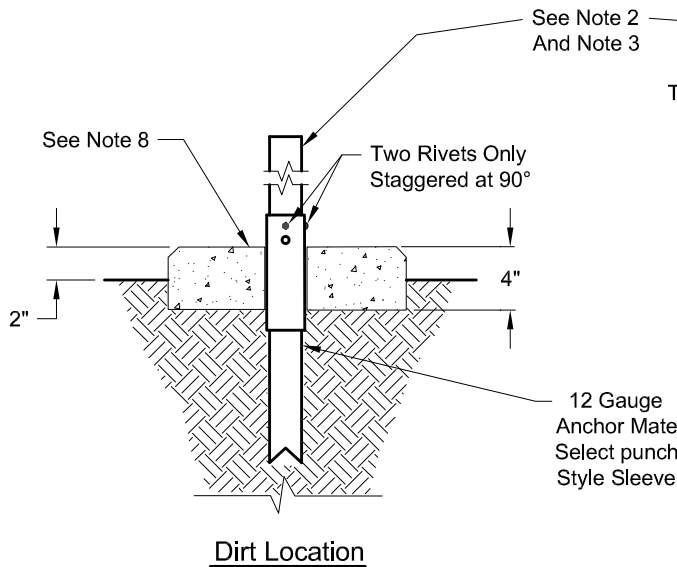
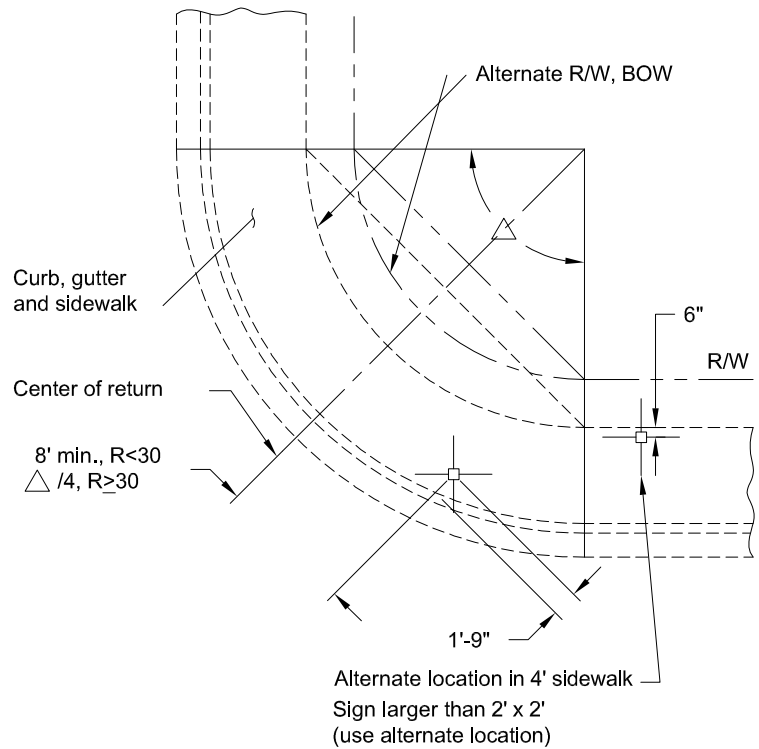
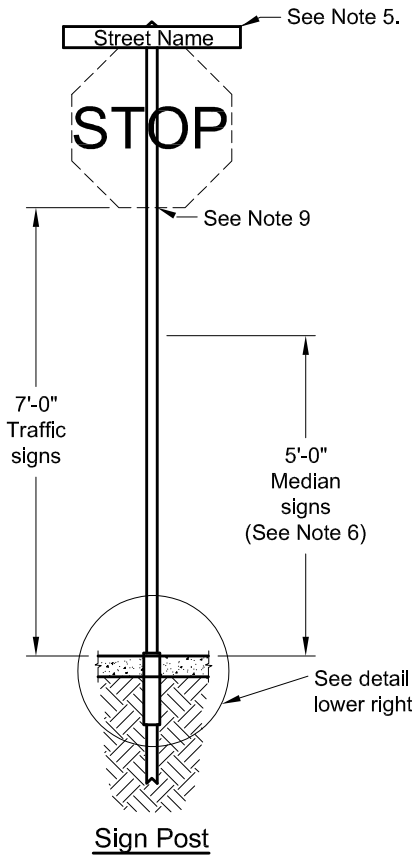




Sign Post Installation

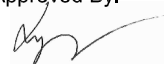


Dr.	JP	No.	Date	Revision	Appr.	Approved By:
Ch.	SN	1	9/03	CHANGED 2"Ø PIPE TO 2" SQ.		 Lyman Chang City Engineer RCE No. 53149
		2	2/04	MOVED NOTES TO SECOND PAGE		
Date	2/21					2/3/2021 Date



Notes:

1. Concrete for post installation may be Class C concrete.
2. Posts shall be new 2"x 2" 14 gauge galv. tube set plumb.
3. When Sign square footage is 7.5 square feet or more post shall be 2" x 2" 12 gauge galvanized tubing.
4. Posts shall be select punch both ends, 12" from bottom end and no greater than sign height at top end, on four Sides. Post shall be installed 6" minimum into sleeve.
5. Street name and traffic signs per Std Plan 142, a min. vertical clearance of 9'-6" at locations with street name signs only.
6. R10's (one way signs) to be located 1.5' from bottom of sign when placed in the median.
7. A powder coat (Downtown Green) is required for downtown locations.
8. Form and edge 12" x 12" concrete apron 4" thick in dirt or landscaped locations.
9. Min. vertical clearance of 6'-6" at locations with multiple signs. (not including street name signs.)
10. R26 / R28 rotated 45°.

Dr. JP	No.	Date	Revision	Appr.	Approved By: 	2/3/2021 Date	STD PLAN 119
Ch. SN	1	2/04	ADDITION OF SECOND PAGE				
Date 2/21	2	2/21	ADDED SENTENCE TO NOTE 4				
					Lyman Chang City Engineer RCE No. 53149		