



NEWS RELEASE

Date: Friday, May 4, 2007
District: District 10 - Stockton
Contact: Lisa Balcom
Phone: (209) 941-6562
FOR IMMEDIATE RELEASE

TRAFFIC ADVISORY CLOSURE SAN JOAQUIN/SACRAMENTO HIGHWAY 12 EMERGENCY MAINTENANCE OPERATIONS

STOCKTON/SACRAMENTO – The Department of Transportation (Caltrans) will conduct emergency maintenance, pavement repair and safety improvements requiring daytime closure of Highway 12 from Interstate 5 in San Joaquin County to Highway 160 in Sacramento County.

This work is scheduled for Tuesday, May 15th, Wednesday, May 16th and Thursday, May 17th. The highway closure will be in place from 7:00 a.m. to 4:00 p.m. each day.

The signed detour for the area will be Highway 160 North to Walnut Grove Road then to I-5 (a 30 mile/45 minute detour). Motorist should consider Interstate 80 and Interstate 5 as alternate routes.

Trucks will **not** be allowed to use the alternate route. Trucks should use Interstate 5 and Interstate 80 as an alternate routes.

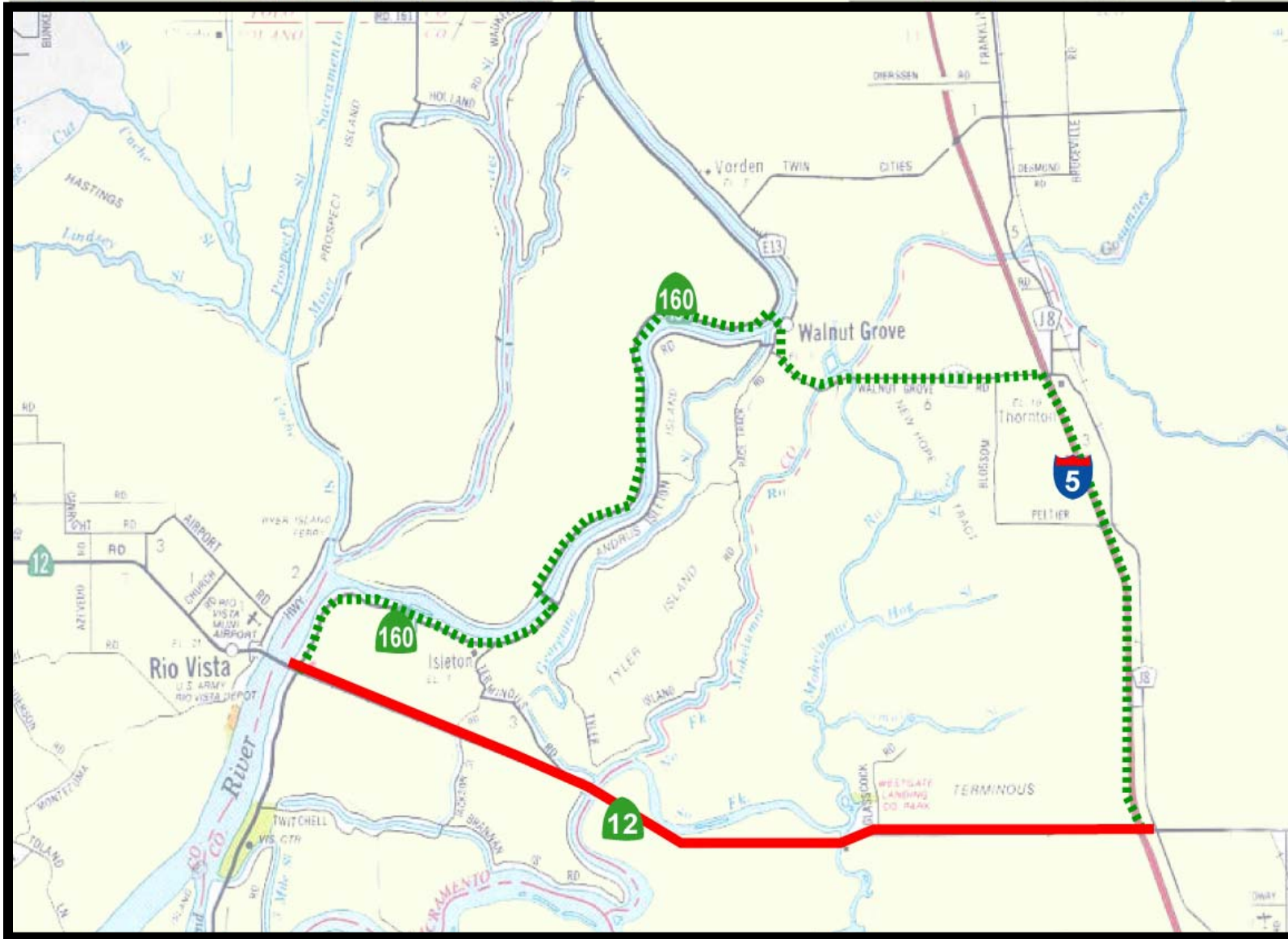
No through traffic will be allowed through the area. Local access to residents, businesses and emergency services will be provided.

This complete road closure will allow maintenance crews to repair two segments of Highway 12. All work will be completed in three days time with this total closure as compared to fifteen days with 90 minute delays of one-way traffic control.

##

Highway Advisory Radios and Changeable Message Signs will be activated to assist motorist.

Hwy 12 Detour Route (Ruta de Desvio)



Construction Zone (LIMITED LOCAL ACCESS ONLY)

Detour Route

Zona de Construccion (SOLAMENTE ACCESO LIMITADO LOCAL)

Ruta de Desvio